

# iAccelerate

## Economic Impact Data

2019 End of Year

iAccelerate's 2019 end of year results showcase the vibrant ecosystem of start-ups, scale-ups, social enterprises and intrapreneurs who continue to develop great companies and with them local and regional jobs and income. This year we also demonstrated the strengths of having a strong local presence combined with regional and international links.

The inclusion of the Bega Valley Innovation Hub (BVIH) to the iAccelerate family is also fulfilling its commitment of creating jobs and growing a supportive and innovative economy for the Bega Valley.

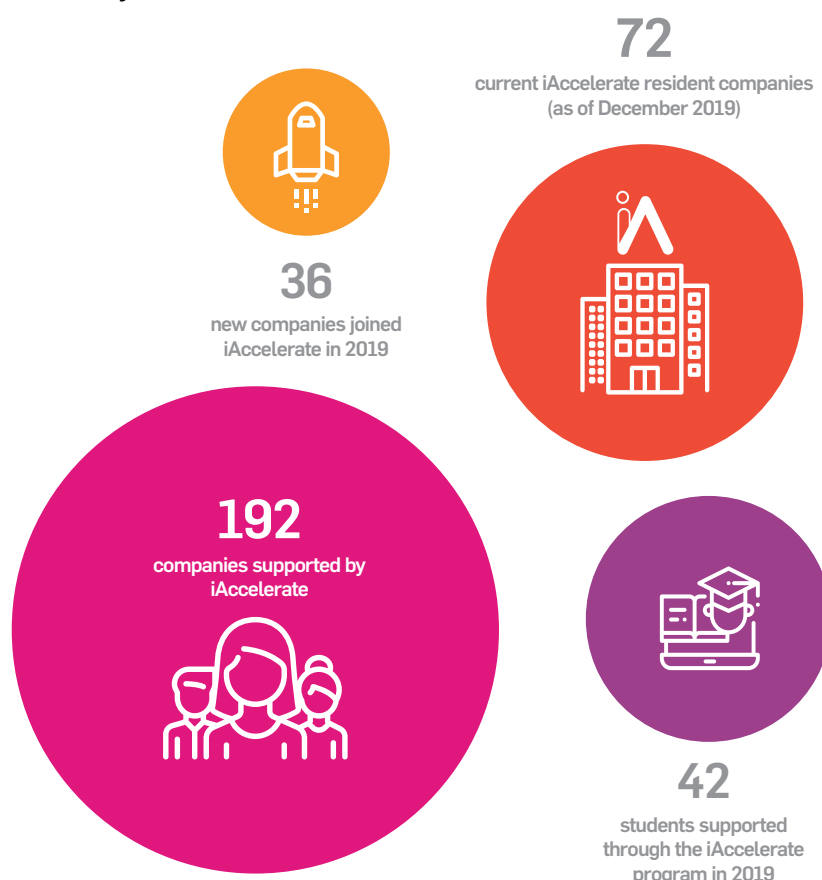
The impact of the businesses supported by the iAccelerate program are directly contributing to increased economic activity across our region and beyond.

Data for the iAccelerate 2019 Economic Impact Report has been compiled from an opt-in survey sent to each of the current iAccelerate resident companies and iAccelerate admin data. 71 respondents completed the survey in 2019.

## Supporting Local Companies

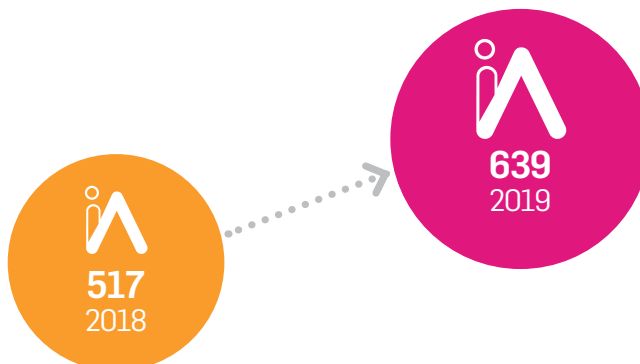
- By the end of 2019 iAccelerate has supported 192 companies in total
- With 4\* intakes in 2019 iAccelerate supported 36 new companies and 42 students through the program

\* iAccelerate and BVIH ( Bega Valley Innovation Hub)



### Creating Local Jobs

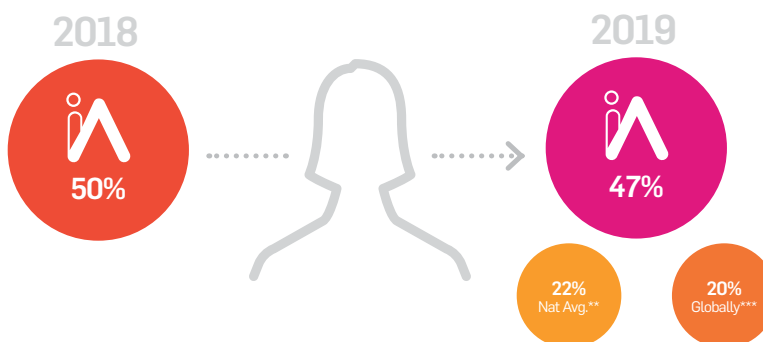
- iAccelerate delivered 639\* new jobs to the region since 2012
- In 2019 we delivered 122 new jobs to the community (not including founder jobs and other opportunities)



\* iAccelerate and BVIH (Bega Valley Innovation Hub)

### Female Participation

- 47%\* of iAccelerate companies have at least one female founder



\* iAccelerate and BVIH (Bega Valley Innovation Hub) \*\* Source: Startup Muster 2018 Annual Report \*\*\* Source: Crunchbase EOY 2019 Diversity Report

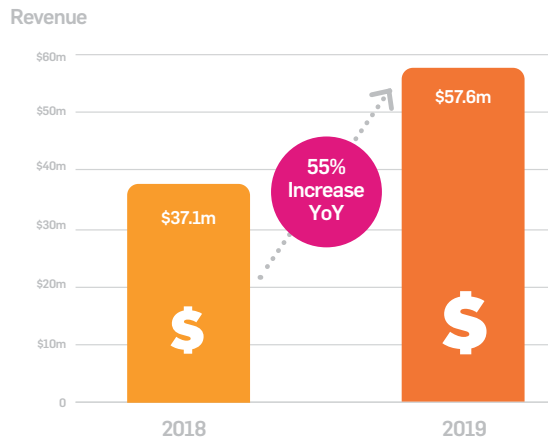
### Sector Diversity

iAccelerate supported 92 companies in 2019 in a range of fields including tech, hardware, service, education, health, wellbeing and social



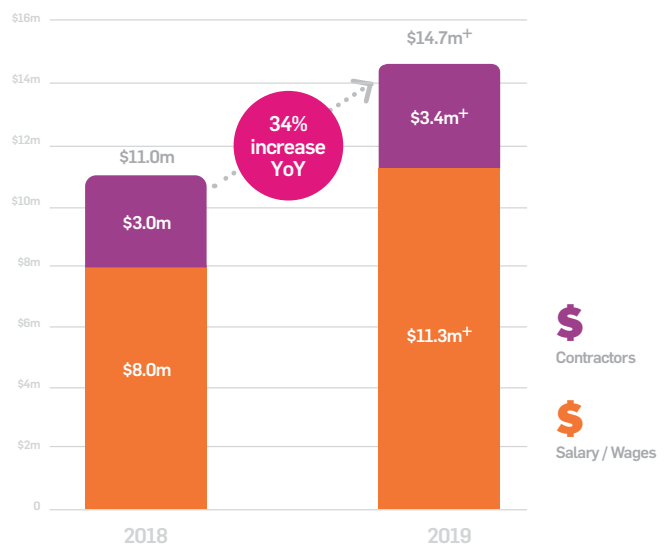
## Making Sales

- Over \$57.6m revenues by iAccelerate Companies in 2019



## Money into the Local Economy

- 34% increase YOY in wages & payments to contractors
- 43% increase in salary/wages paid

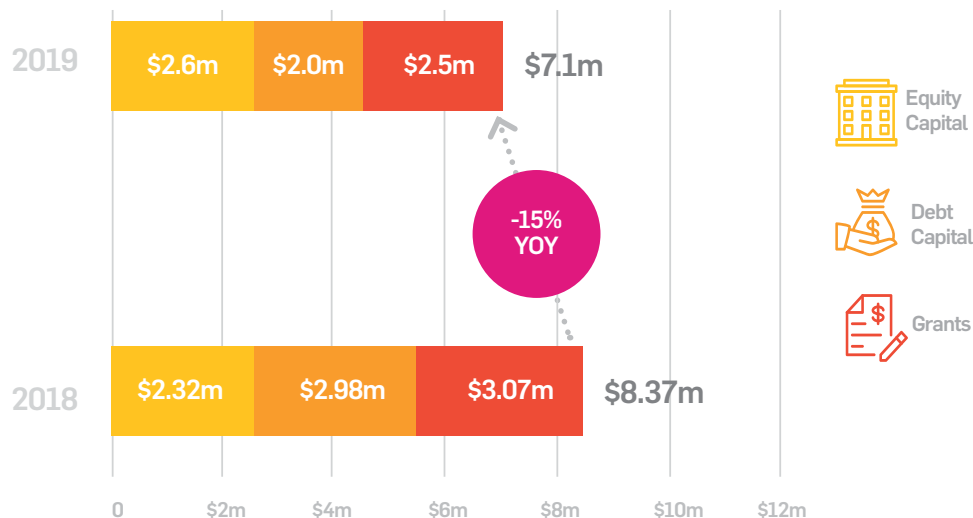


# iAccelerate

## Economic Impact Data

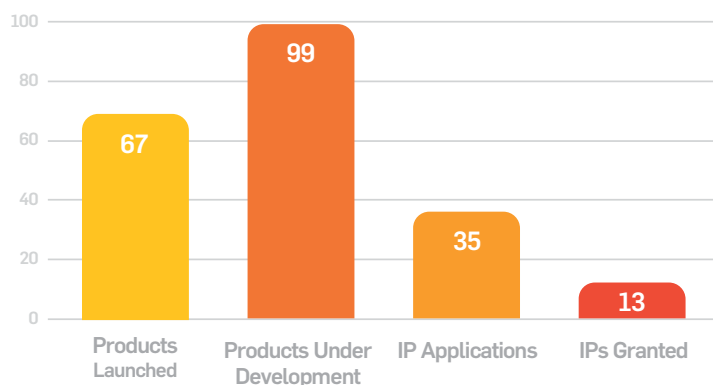
2019 End of Year

### Investment



### Products and IP\*

- iAccelerate companies continue to launch & develop new products.
- 85% of iAccelerate companies have new products under development



\* iAccelerate and BVIH ( Bega Valley Innovation Hub)

### Get involved in iAccelerate

APPLY / MENTOR / INVEST

iAccelerate, iAccelerate Centre, Innovation Campus  
 University of Wollongong NSW 2522 Australia  
 W [iaccelerate.com.au](http://iaccelerate.com.au) T +61 2 4239 2150